

T&T
THOMAS&THOMAS

FURNITURE FOR
LIFE

WWW.THOMASTHOMAS.NET


GET IN TOUCH


Millfield House
Thongsbridge
Holmfirth
West Yorkshire
HD9 7RW

T: 01484 442883
E: info@thomasthomas.net

FOLLOW US

Click below to stay up to date on new projects,
video walkthroughs and the latest photo shoots

 [thomasandthomasfurniture](#)

 [thomasthomasfurniture](#)

PLEASE ENJOY THIS TASTE OF THOMAS & THOMAS DESIGN
TO SEE MORE VISIT:

WWW.THOMASTHOMAS.NET



YORKSHIRE HOUSE

KITCHEN, UTILITY, BOOT ROOM & MEDIA ROOM

Warmth was brought to these shaker style units with a walnut island top with a unique curvature to focus the attention of those gathered together.

The Media & Cinema room features a low fitted cabinet to house AV equipment and at the rear, the cabinetry has in-built fridge and freezer for drinks and ice-cream. The utility and boot room provides ample space to remove (and wash) muddy clothes and even has a shower area for their favourite four legged friends!

[VIEW YORKSHIRE HOUSE](#)







SOUTH WALLINGFORD COTTAGE

KITCHEN & UTILITY

Featuring a large centre piece island topped with Silestone quartz and inset French Farmhouse sink, the positioning of the kitchen cooking area takes full advantage of the garden aspect, perfect to entertain guests on those warm summer evenings and cosy winter nights.

[VIEW SOUTH WALLINGFORD COTTAGE](#)







WARWICKSHIRE COUNTRY HOUSE

KITCHEN, BEDROOM, BATHROOM, WINE ROOM & BOOTROOM

The whole house project features a cohesive design, including a timeless kitchen with a freestanding island and AGA that extends into an impressive wine room. The communal areas, such as the hallway and bootroom, offer practical functionality with a stylish touch. The bedrooms and bathrooms feature integrated floor-to-ceiling storage, maximising storage space while maintaining an elegant aesthetic.

[VIEW WARWICKSHIRE COUNTRY HOUSE](#)







CHESTNUT FARM

KITCHEN, BEDROOM, DRESSING ROOM, LIVINGROOM & BOOT ROOM

Design, build and installation of a dramatic kitchen focused around a large carrera marble topped island with a large inset range cooker, complimented by a matching utility room.

Light, comfortable bedrooms and dressing rooms with fabric lined open storage create striking, easy access hanging and shelf space. Back downstairs the traditionally styled living room in soft grey compliments the original oak flooring. Hand painted throughout, folding cabinet doors next to built in bookshelves hide a large TV while slate lined log boxes frame the fireplace creating a timeless yet practical space to enjoy.

[VIEW CHESTNUT FARM](#)







OXFORDSHIRE HOME

KITCHEN & GARDEN ROOM

This garden room extension to a traditional Oxfordshire house required an open and light kitchen with room for all the family to enjoy, the soft pale colours and work tops bring the shades of the outdoors into the heart of the home.

[VIEW OXFORDSHIRE HOME](#)





NORTHAMPTONSHIRE MANOR

KITCHEN

A timeless kitchen in a newly built house is achieved by using traditional materials granite and hardwoods. A decorative chimney and mantle frames a four-oven AGA in this Georgian-styled kitchen. The island table acts as the centrepiece of the space, and features a beautiful solid maple top an open end to accommodate wine storage. The kitchen is detailed with handmade wrought iron knobs and pulls.

[VIEW NORTHAMPTONSHIRE MANOR](#)







WIMBLEDON BEDROOM

BEDROOM

These large, hand painted wardrobes, complete with turned wooden knobs subtly accentuate the grandeur of the bedroom in this Wimbledon townhouse. Deep drawers and interiors allow for neat storage of folded garments and accessories as well as hung short and full-length clothes.





BOARS HILL HOUSE

KITCHEN

A light and spacious feel to the whole room is realised by using pale and mid-range grays together with a light honed granite. The perimeter furniture is painted in pavillion gray and the island in down pipe. The fixed array spaces of the kitchen, living, and dining rooms is transformed into a dynamic, changeable area through the introduction of a large, sliding, partially-glazed door.

[VIEW BOARS HILL HOUSE](#)







MALMESBURY RESIDENCE

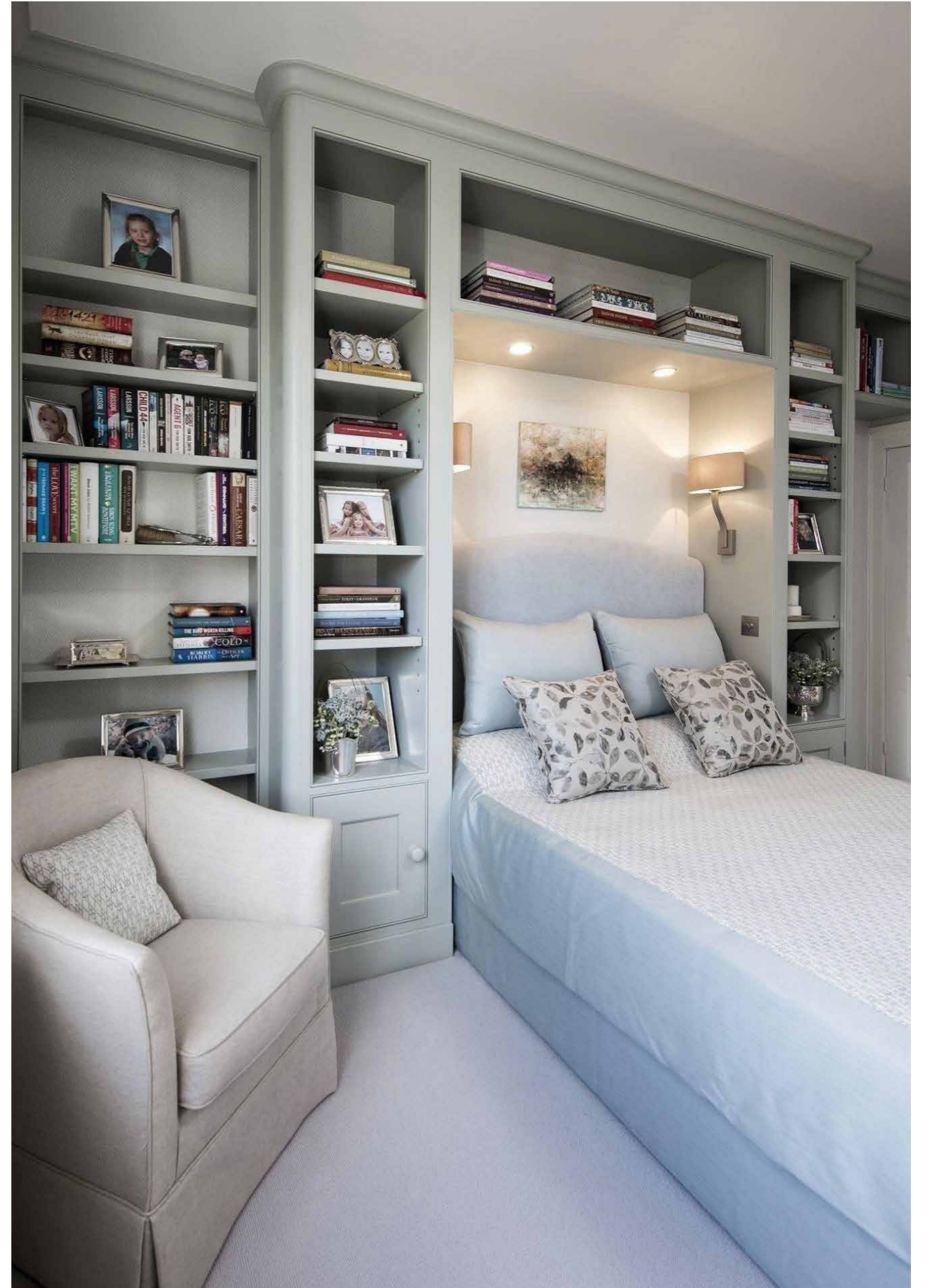
BEDROOM, BATHROOM & DRESSING

This dark grey hand painted finish of the double door vanity unit in the en-suite compliments the grey veins in the natural stone top. Traditional bibcock tap complete the refined traditional look. Finished with hand turned wooden knobs

The bedroom is furnished to maximise space in this Georgian town house. Curved edges give this bathroom a soft, comfortable appearance. The details of Georgian moulding to the door panels to compliment the architecture of the house.

[VIEW MALMESBURY RESIDENCE](#)







BLEWBURY HOUSE

KITCHEN

Large freestanding preparation table combined with the antique oak shelves complete the contemporary design of this family kitchen. The spacious but eclectic feel gives a refined yet homely atmosphere and is achieved by the mix of surface textures and hand painted finishes.

[VIEW BLEWBURY HOUSE](#)







MANOR HOUSE KITCHEN

KITCHEN

The deep, rich colours of the cook's table and Georgian glazed dresser provide contrasting warmth to the cool limestone floor. Large pans and bakeware can be stored in the deep drawers of the table and larger items on the maple slats underneath.





CONTEMPORARY CLASSIC

KITCHEN

Simple square edged panels married with white granite give this family kitchen a cool, spacious feel, complimenting the contemporary architecture of the house.



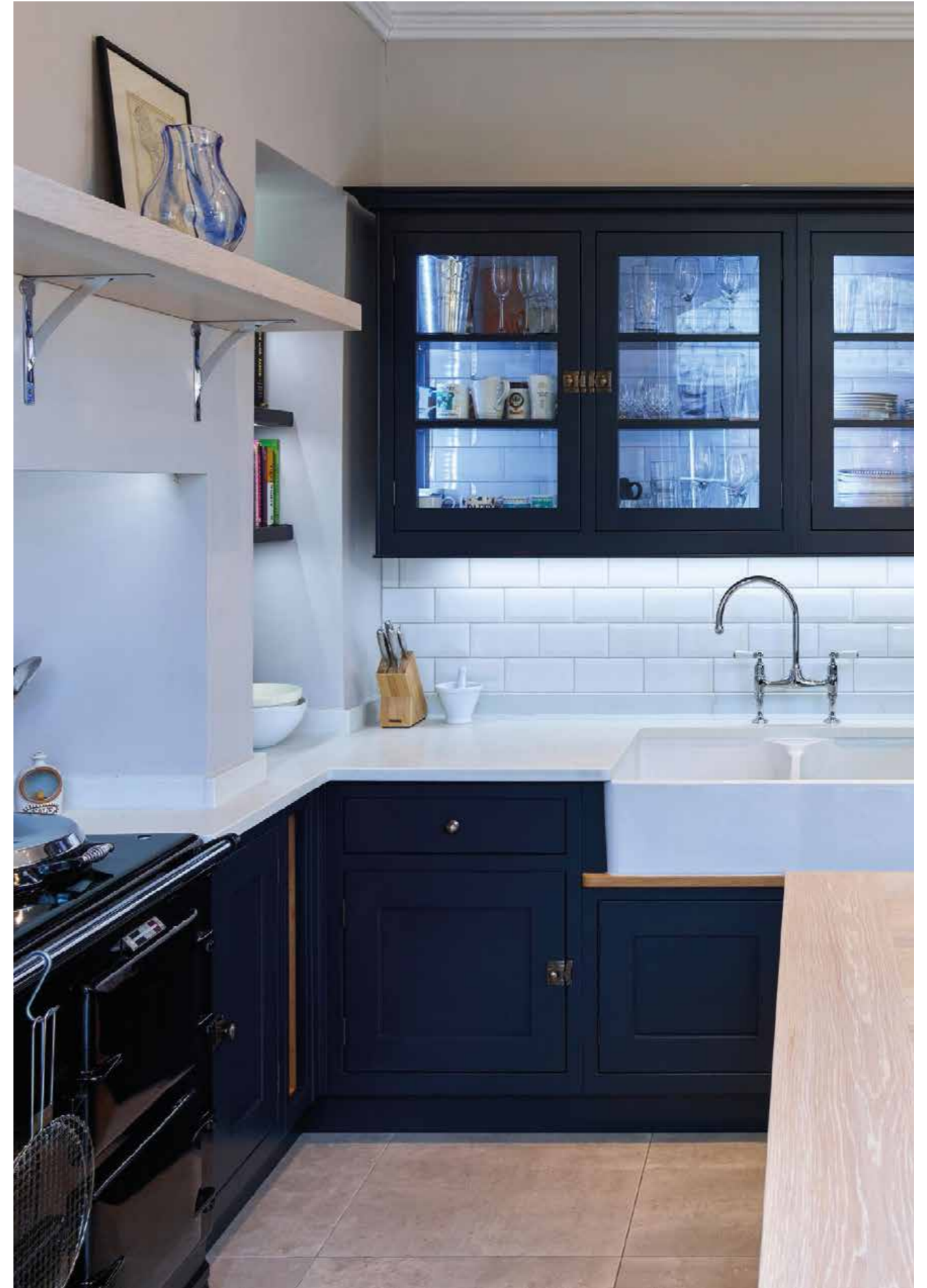


WILMSLOW RESIDENCE

KITCHEN

Glazing and pale surfaces combined with the dark greys give this kitchen a sharp dramatic feel. The tiles backless wall cupboard and the white pigmented European oak compliment the architecture of this Victorian Cheshire country house.

[VIEW WILMSLOW RESIDENCE](#)





CAKE



FRENCH FARMHOUSE

KITCHEN

The tongue and groove panelling above the large double bowl French Farmhouse ceramic sink which can accommodate even the biggest of AGA pans gives this design a real country feel with a refreshing edge.



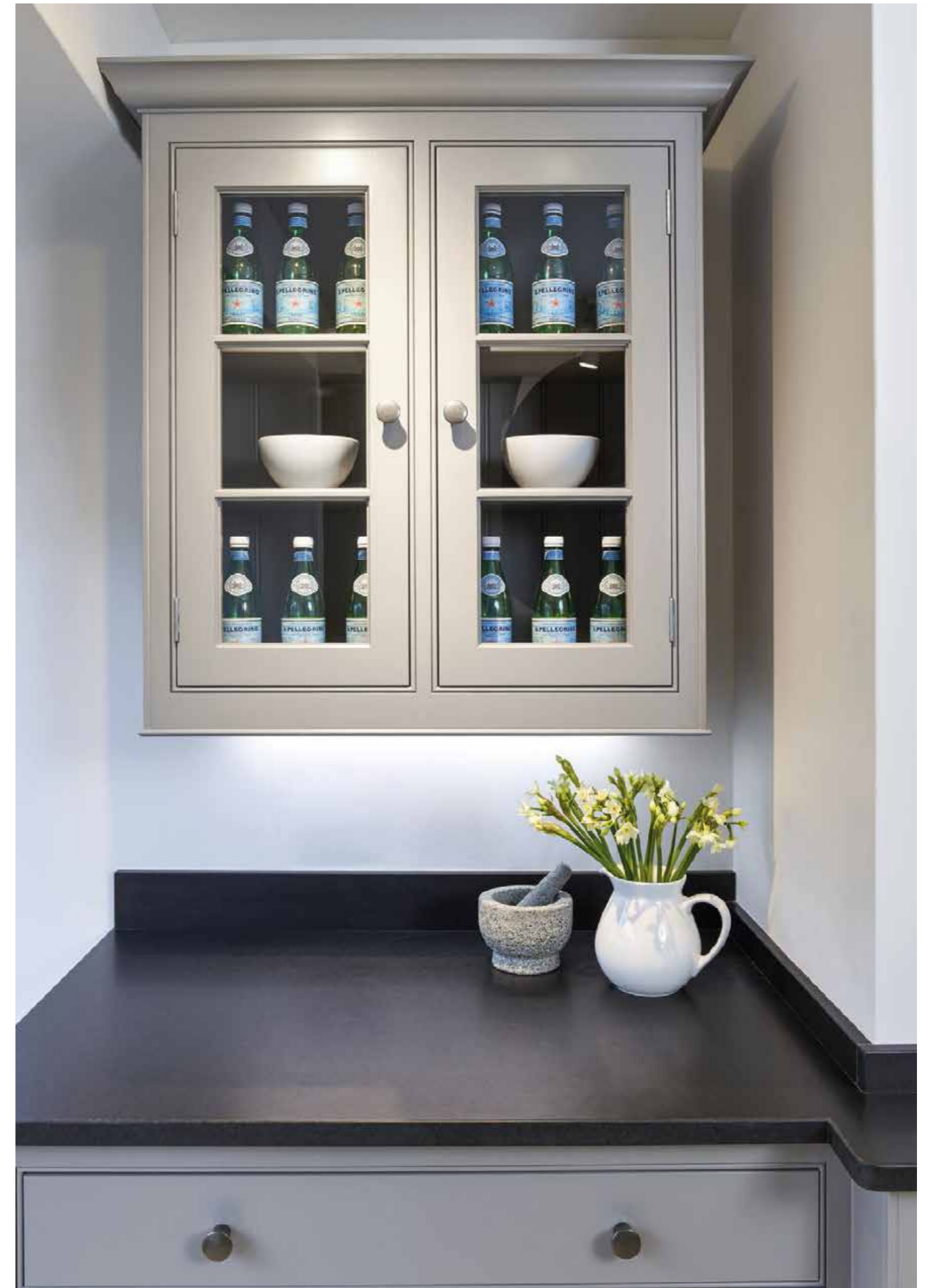


SHIPSTON COTTAGE

KITCHEN

Sharp lines and wide glazed cupboard give a contemporary feel to the traditional ceramic French Farmhouse sink. Colour matched handmade glass back splash enhance the modern look of this kitchen.

[VIEW SHIPSTON COTTAGE](#)





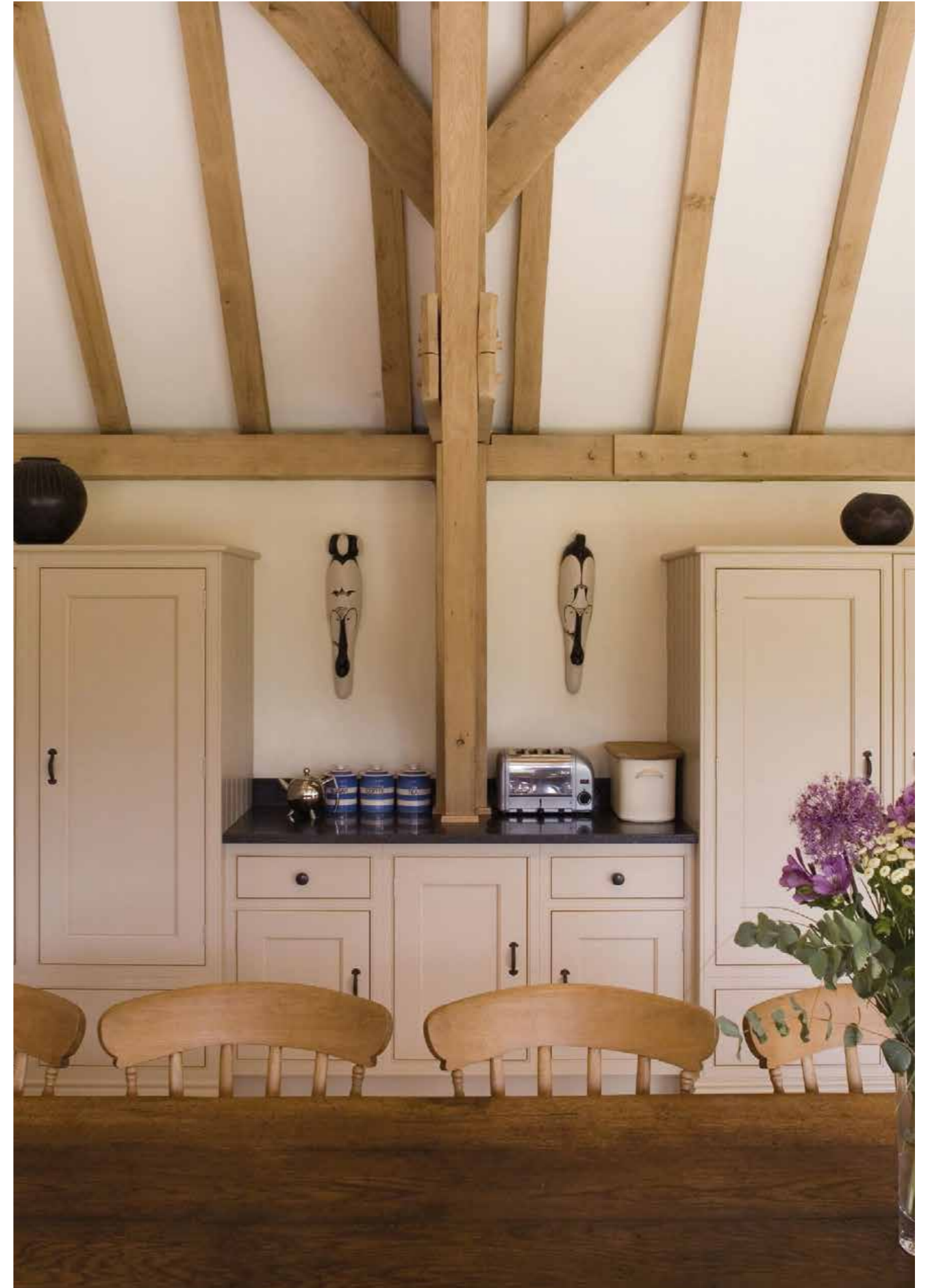


THE RED BARN

KITCHEN

Bold eating-room red paint is used to make the island the real focal point in this barn conversion. The design seeks to create maximum working and seating space with a separate breakfast area.

[VIEW THE RED BARN](#)







OAK BOOTROOM

—
BOOTROOM

A must in every home, a place to store boots, coats and even an ironing board. Tailored to suit your things. Absolute practicality made beautiful in natural European oak.





THE WORKSHOP

HANDMADE ENGLISH FURNITURE

Our dedicated team is committed to guiding you through every step of creating your dream home. All our furniture is handmade to order in England by skilled craftsmen before being expertly fitted and then receiving on-site hand-painting. We offer handcrafted, solid wood furniture for every room in your home, including the kitchen, boot & utility rooms, bedrooms, media rooms, and more. Our craftsmen have years of experience in designing and installing furniture that is tailored to each families unique requirements, ensuring the highest levels of customer satisfaction.



GET IN TOUCH

Millfield House
Thongsbridge
Holmfirth
West Yorkshire
HD9 7RW

T: 01484 442883
E: info@thomasthomas.net

FOLLOW US

Click below to stay up to date on new projects,
video walkthroughs and the latest photo shoots



[thomasandthomasfurniture](#)



[thomasthomasfurniture](#)

T&T
THOMAS&THOMAS

WWW.THOMASTHOMAS.NET